

Señor Antonio Razeto

Superintendencia del medio ambiente

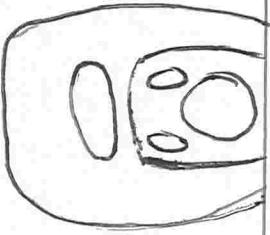
Adjunto plano hecho manualmente para cumplir con lo acordado.



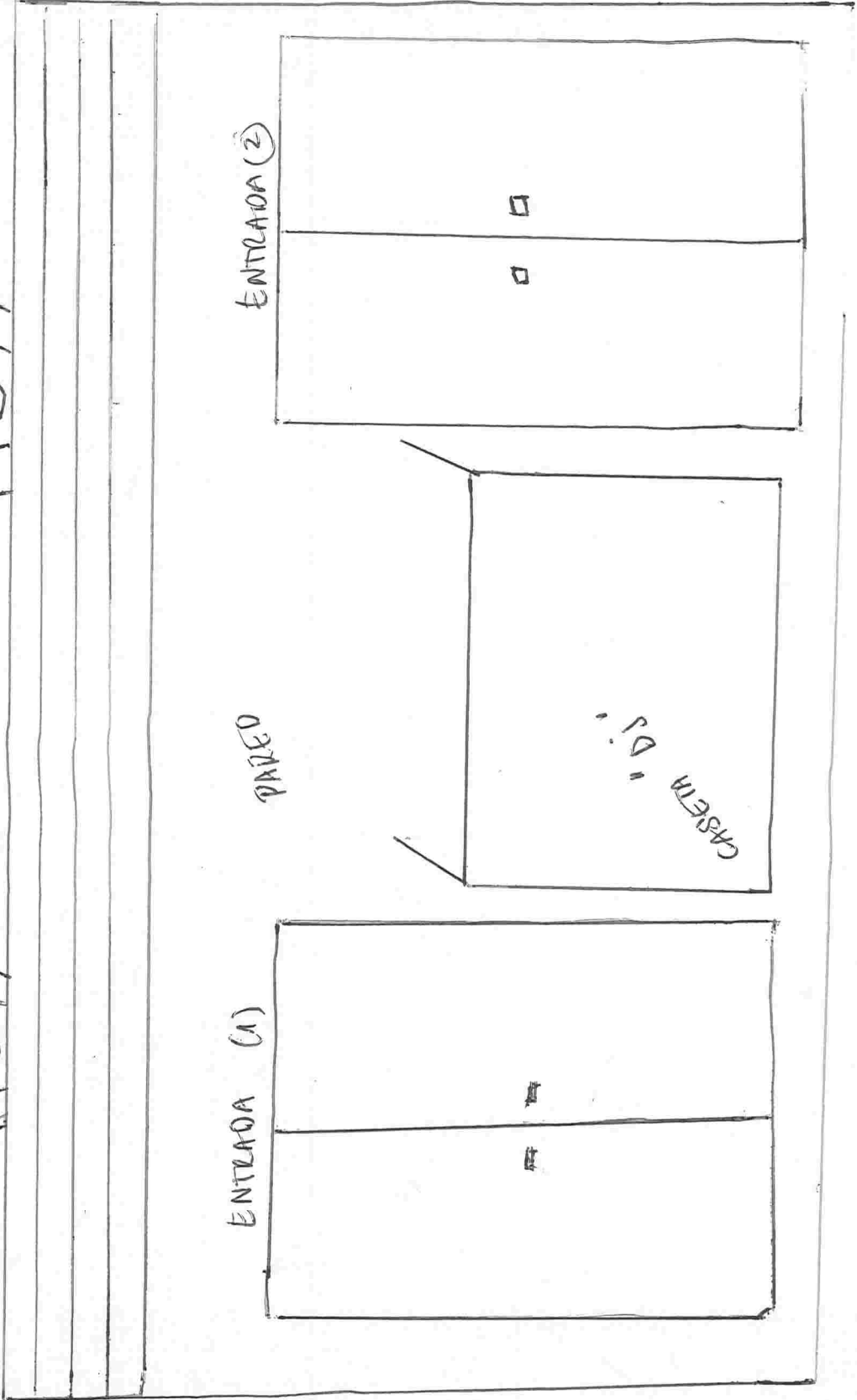
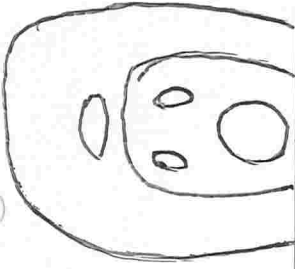
OMAR PARODI CORTÉS



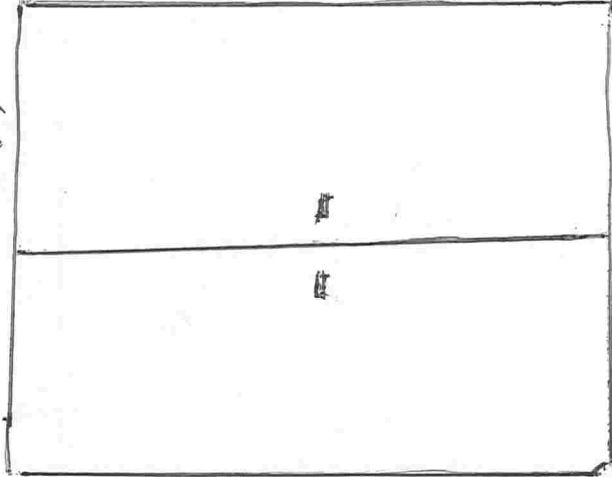
PARLANTES (1)



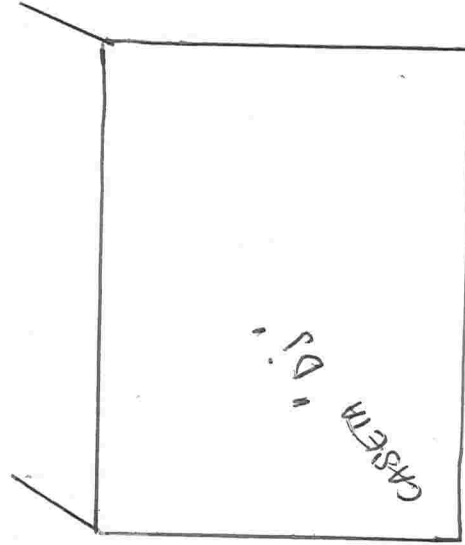
PARLANTES (2)



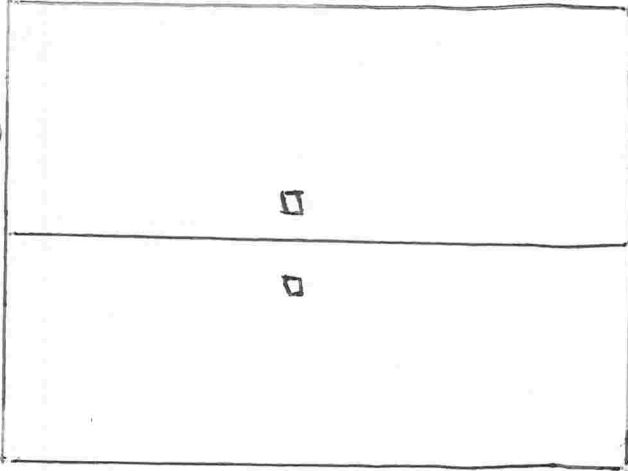
ENTRADA (1)



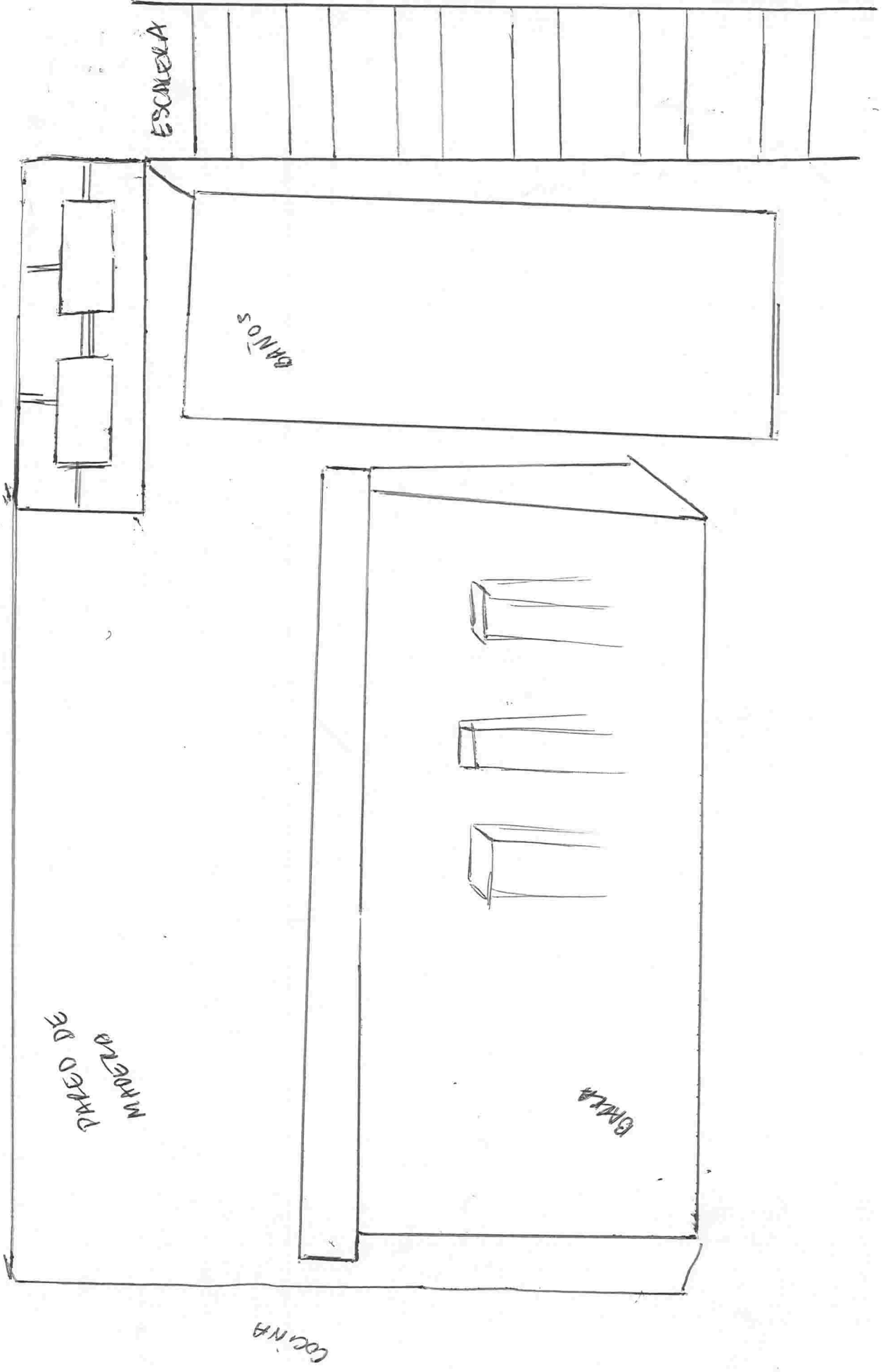
PARED



ENTRADA (2)



SEGUNDO PISO



ESCALERA

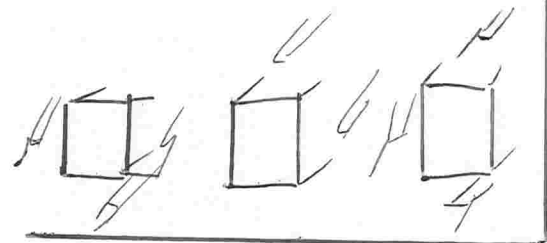
BAÑOS

PARED DE  
MADERA

SALA

COCINA

SEGUNDO PISO



ESTRUCTURA DE FIERRO



TERRAZA

SUPERFICIE TERRAZA 3x3

ESCALERA

ESCALERA

ENTRADA LOCAL